



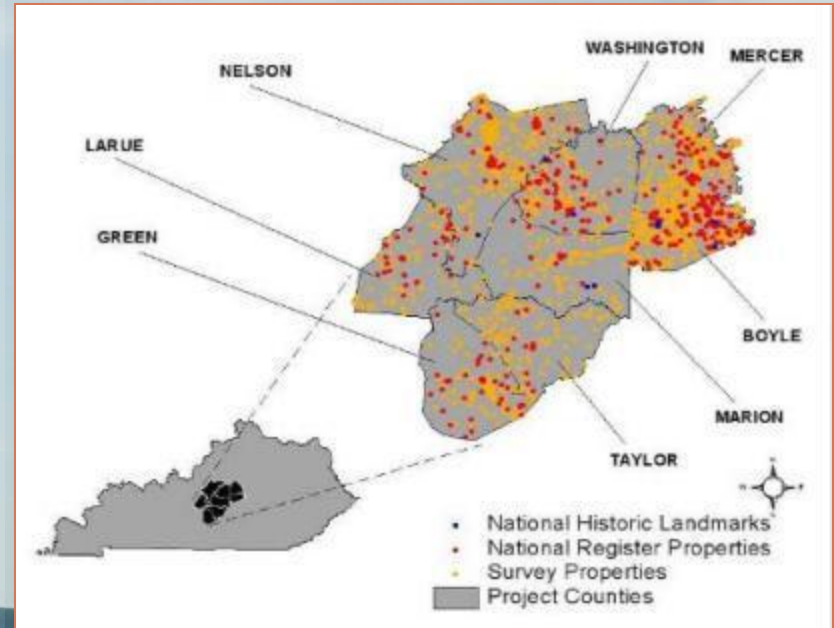
Heritage-Based Rural Development in the Central Kentucky Crossroads Region

New Partners for Smart Growth
Amy Potts, Preservation Kentucky

2.4.12

Kentucky Crossroads

Where Everything Comes Together



PRESERVATION
KENTUCKY

Perryville



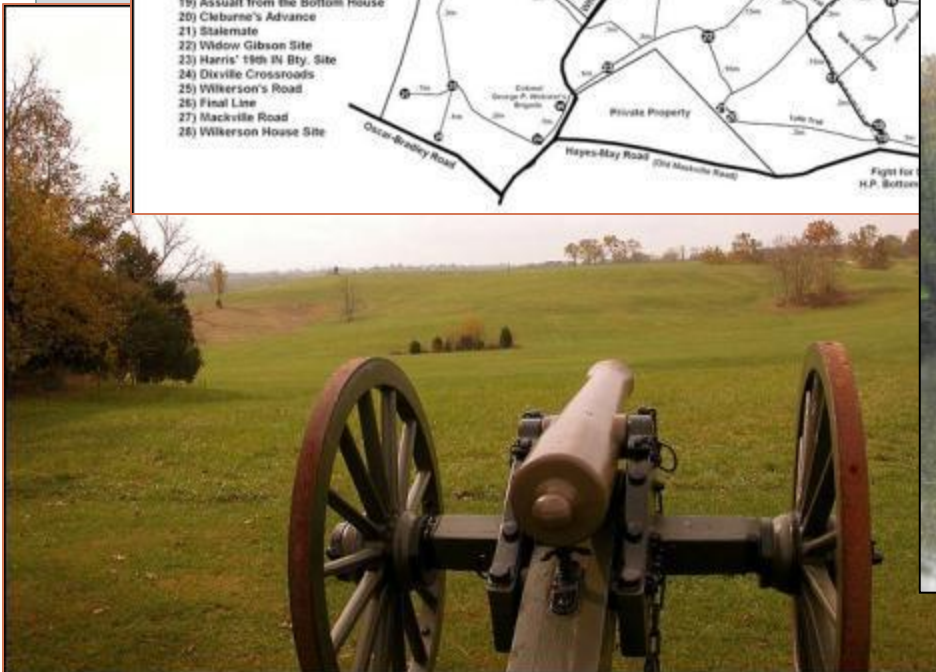
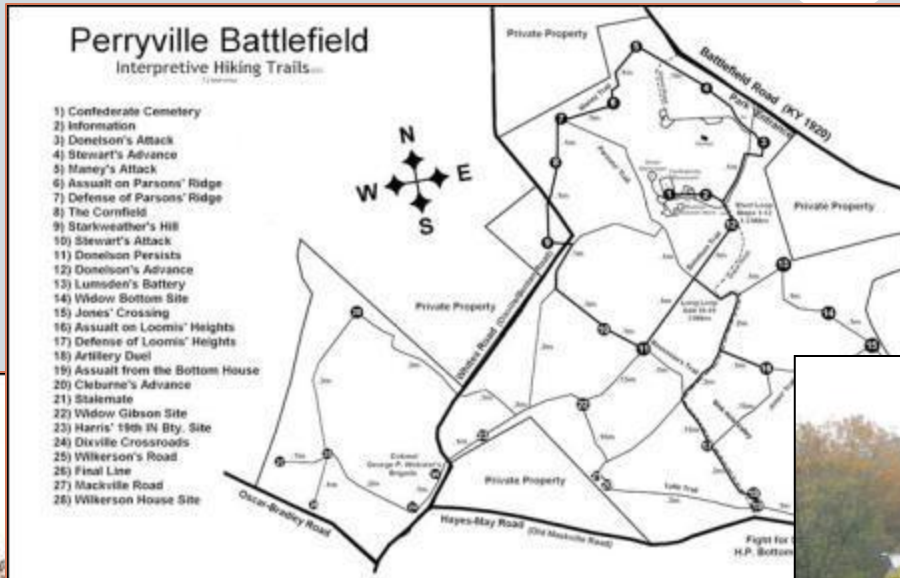
Perryville

Assets:

- History
- Location

Challenges:

- Development Pressure
- Lack of Capacity



Heritage Based Strategies

Educate

- Hosted Community Planning Workshop
- Made Inventory of All Existing Programs/Assets
- Oral Histories



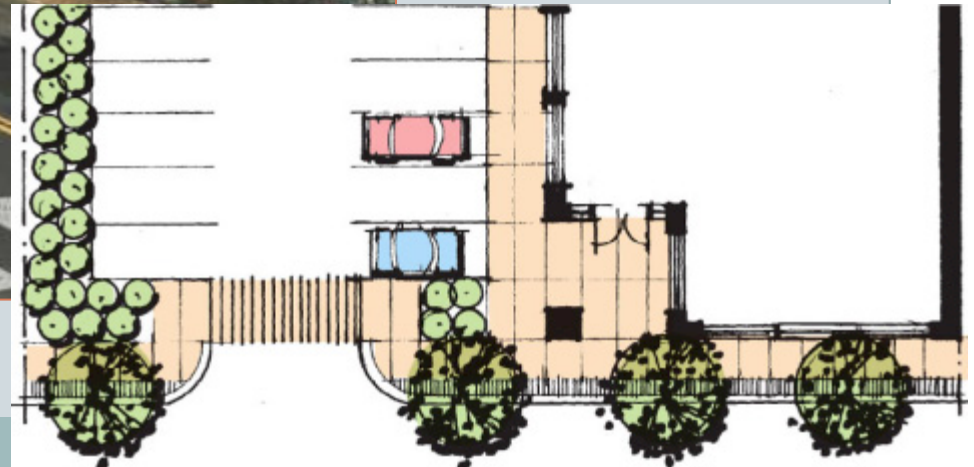
Heritage Based Strategies

Conserve

- Workshops
- Civil War Trust /American Battlefield Protection Program
- Rural Design Guidelines



Streetscape Design



Heritage Based Strategies

Encourage Entrepreneurship

- Main Street
- Incentives through County EDP partnership
- Perryville Grows/Farmer's Market



PERRYVILLE



GROWS!

COMMUNITY GARDEN & FARMERS MARKET



April is Redbud Month

Saturday, April 16

4:00-6:00p.m.

Perryville Community Center

One Free Redbud Seedling per person



It's time to plant your garden.

Join us in our Community Garden and
Farmers Market

Free Seeds for your Family Garden

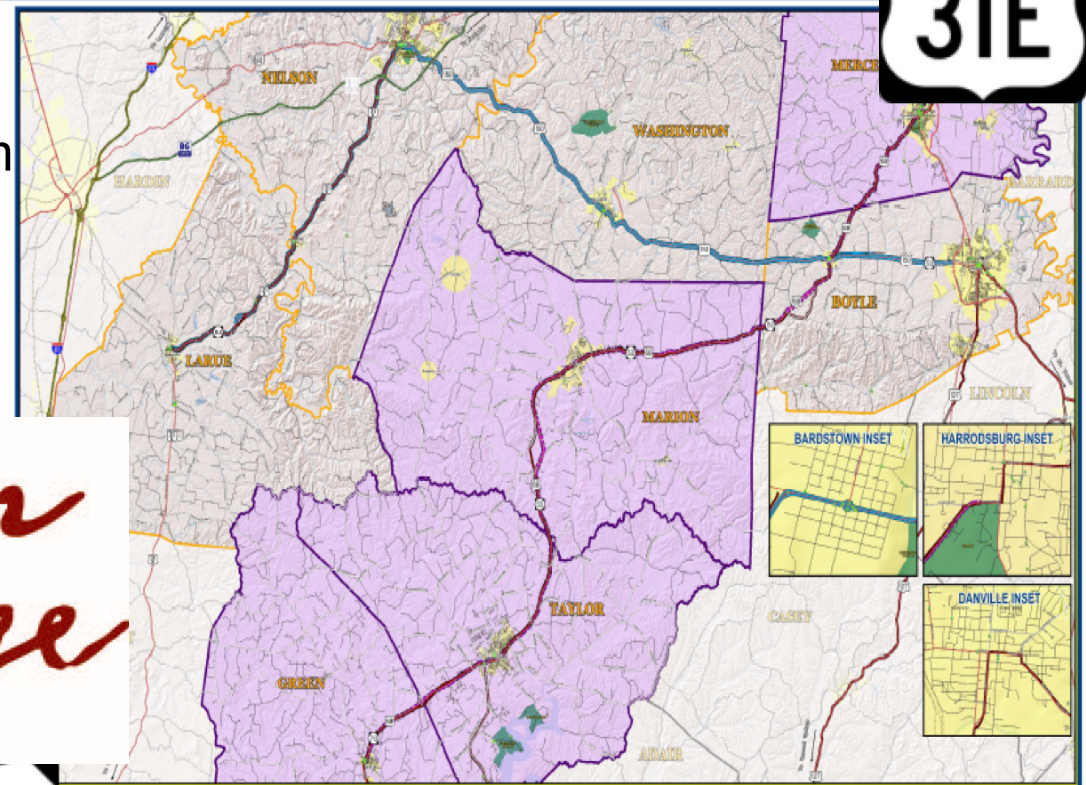
For More Information call: 859-332-1862



Heritage Based Strategies

Develop Cultural Heritage Tourism

- National Scenic Byway Program
- Civil War Heritage Trails



LEGEND Intrinsic Resource Point Location The Lincoln Heritage Corridor Potential Lincoln Heritage Byway Extension Interstate Highway Martha Layne Collins Bypass Pkwy U.S. Highway Kentucky State Route Other Roads	Other Layers Other Scenic / Heritage Corridors Railroad Counties Within Lincoln Heritage Corridor Scenic Byway Area Potential Counties for Lincoln Heritage Corridor Scenic Byway Extension Other County Boundary City Limits Parks	GENERAL LOCATION INSET 	Intrinsic Resource Points The Lincoln Heritage Corridor Scenic Byway CMP NOTES: Prepared for: Prepared by:

Where Are We Now?



Positives

- New Businesses
- More Renovation
- More land to Civil War Trust

Challenges

- Visitor Support Infrastructure
- Continued Capacity





Amy Potts
Preservation Kentucky
PO Box 5192
Frankfort KY 40602
502-871-4570

amy@preservationkentucky.org
www.kycrossroadsregion.com

